

# Parkheath

*Sold on Service*

---

**Prince Arthur Road NW3**  
**Asking Price £1,400,000**



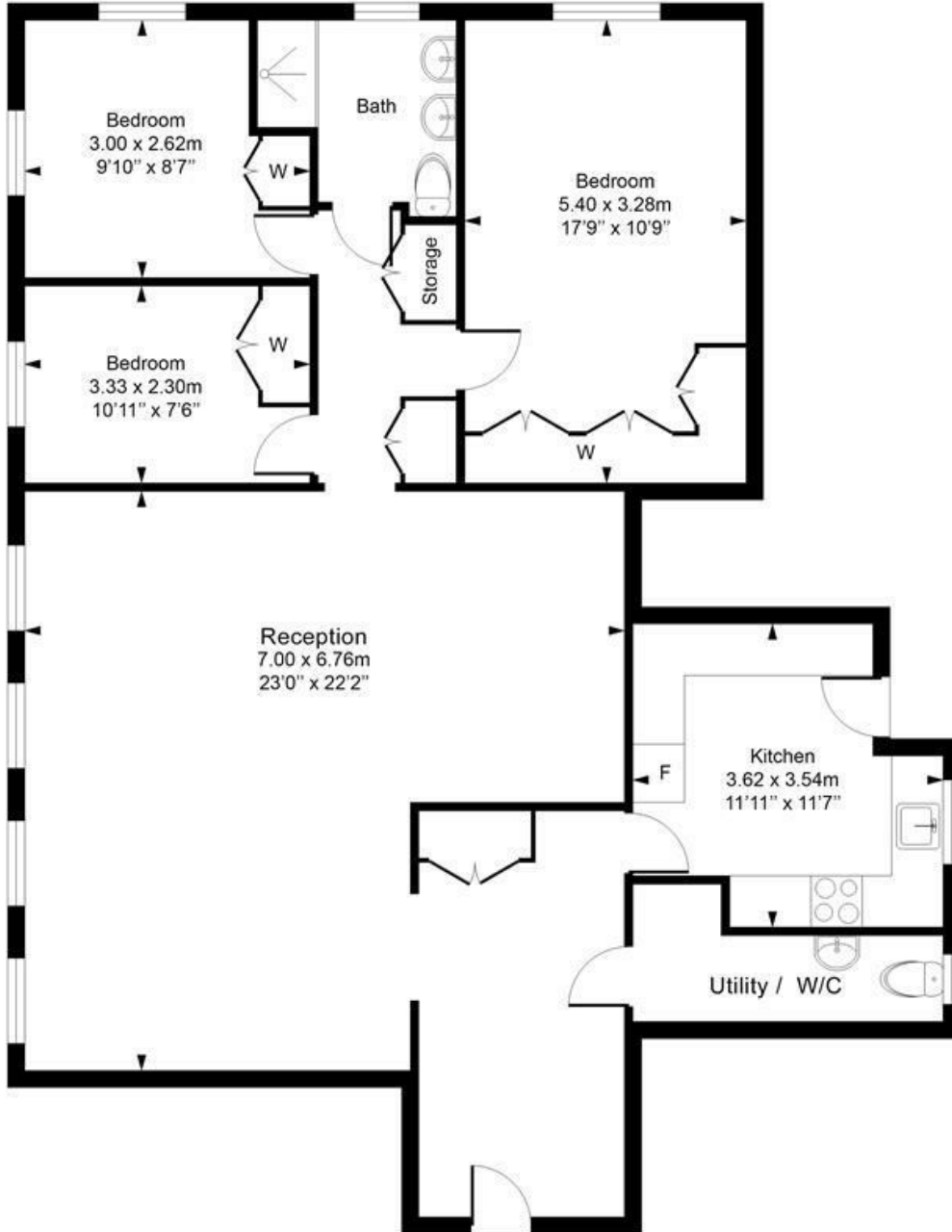
Spacious and generously proportioned flat  
In one of Hampstead's most sought after blocks  
Attractive and bright 23' x 22' reception  
Prime Hampstead location  
Over 1200 sq ft on the second floor

3 bedrooms  
Lift, portorage and communal gardens  
First come first served off street parking  
Share of freehold  
Far reaching views

Belsize Park Office 020 7431 3104

# Greenhill

Approximate Gross Internal Area = 114 Sq m / 1223 sq ft



## Second Floor

This plan is for layout guidance only. Drawn in accordance with RICS guidelines. Not drawn to scale unless stated. Windows & door openings are approximate. Whilst every care is taken in the preparation of this plan, please check all dimensions, shapes & compass bearings before marking any decisions reliant upon them.

ELLIE CLAIRE PHOTOGRAPHY LTD  
[www.ellieclairephotography.com](http://www.ellieclairephotography.com)

The particulars do not constitute part of an offer or contract. The particulars, including text, photographs and plans, are for the guidance only of prospective purchasers/tenants and must not be relied upon as statements of fact. The descriptions provided therein represent the opinion of the author and whilst given in good faith should not be construed as statements of fact. Nothing in these particulars shall be deemed a statement that the property is in good condition or otherwise or that any services or facilities are in good working order. All measurements are approximate